

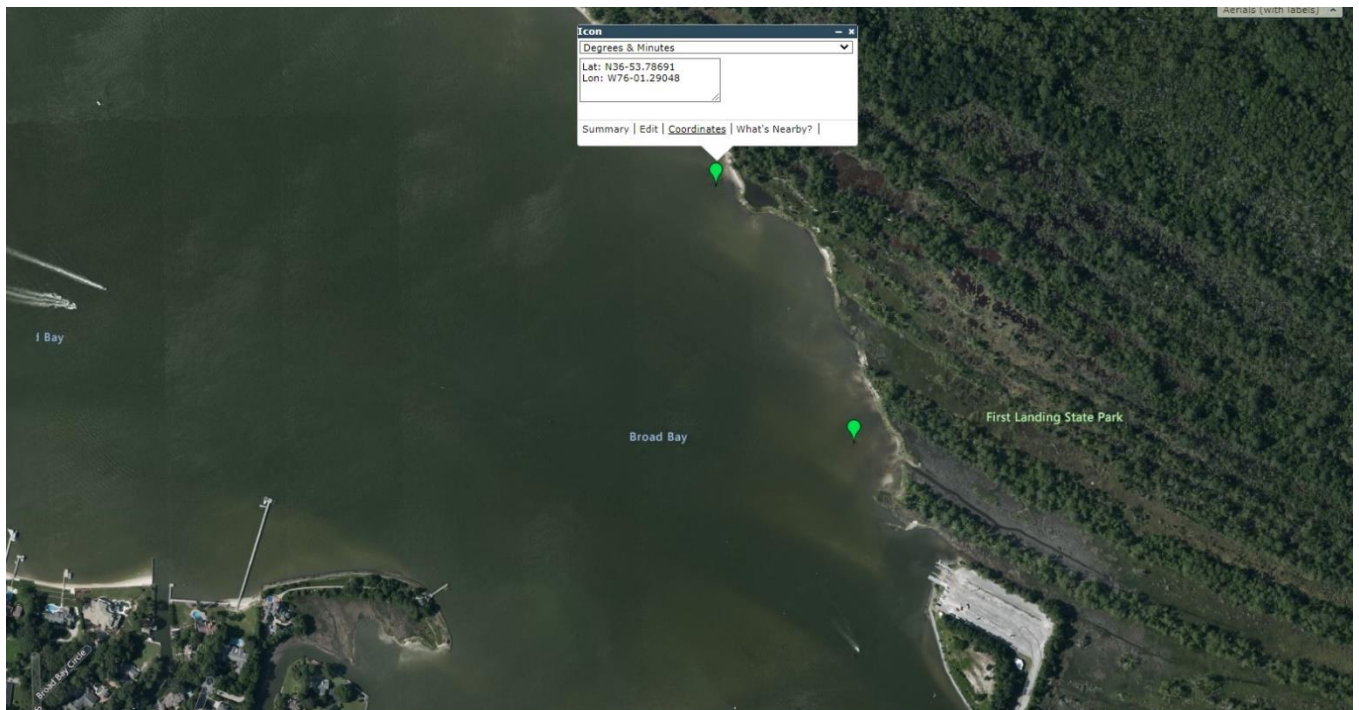
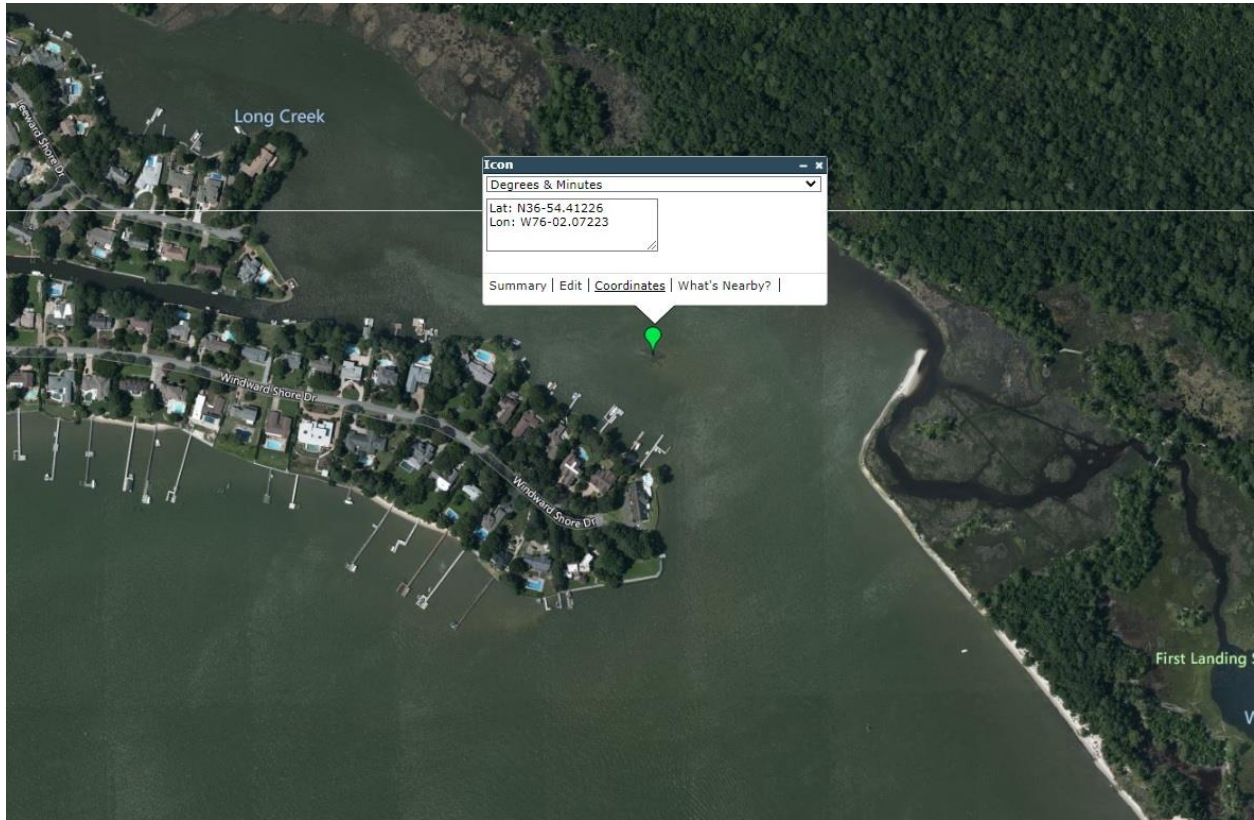
REQUEST FOR BIDS: REMOVAL OF ABANDONED AQUACULTURE ENCLOSURES, WITHIN THE WESTERN BRANCH, LYNNHAVEN RIVER, LONG CREEK AND BROAD BAY, IN THE CITY OF VIRGINIA BEACH

Scope of Work: Removal of abandoned aquaculture enclosures in Virginia Beach, Virginia

VMRC is seeking to contract for the removal of abandoned aquaculture enclosures at numerous locations Virginia Beach, Virginia. The enclosures are located within the Western Branch Lynnhaven River, Long Creek, and Broad Bay as shown on the attached aerial maps. Some of the aquaculture cage enclosures are empty and intact. Others are full of oysters, and/or shell, and may be somewhat imbedded into the bottomland areas. Complete removal of the enclosures is required. Any live oysters found within any such enclosures shall be placed on an existing VMRC approved reef site within close proximity to the work area. All dead oysters and/or oyster shell shall be left upon the subaqueous bottomlands at the removal location. Strike attached to such enclosures can remain on the enclosure and retained by the successful bidder. All removed enclosures or portions of such enclosures that are not in usable condition shall be taken to a pre-approved disposal site. All bids shall be received no later than August 31, 2022. Successful bidders will be notified on or about September 9, 2022. All removal work must be completed no later than October 31, 2022.

Successful bidders shall provide information demonstrating that they have equipment that is capable of removing the enclosures entirely from the substrate. Bid price can be for all sites, or specific to a one or more location. A VMRC observer will be required during the removal of the enclosures (and for placement of all live shellstock on an approved reef site). Since any useable enclosures will become the property of the selected bidder, a \$0 dollar bid is acceptable.

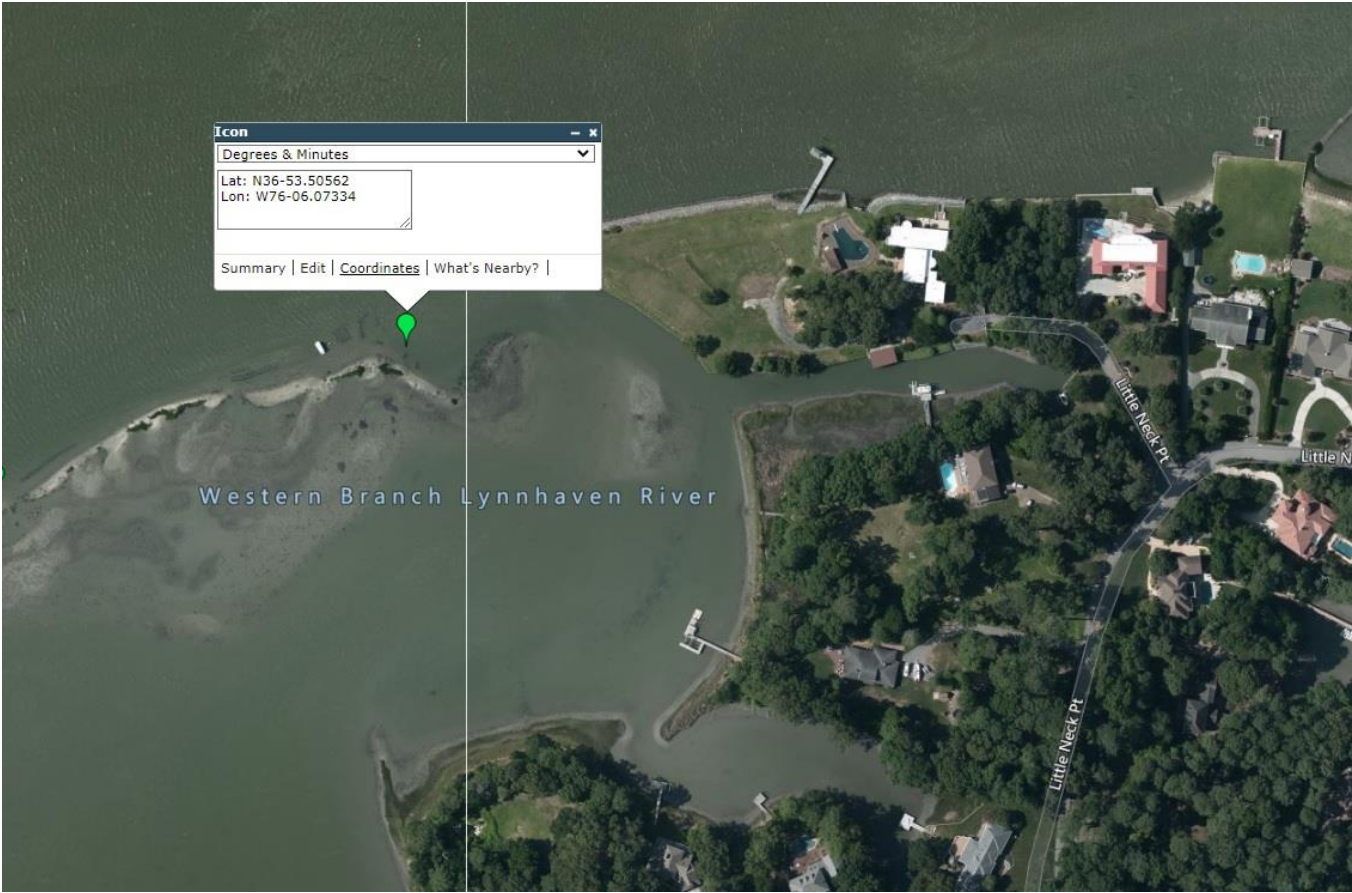
Long Creek and Broad Bay cage areas



Broad Bay and Long Creek Reef sites (# 1 and 2)



Western Branch, Lynnhaven River cage site



Western Branch, Lynnhaven River cage and reef site (#3)

